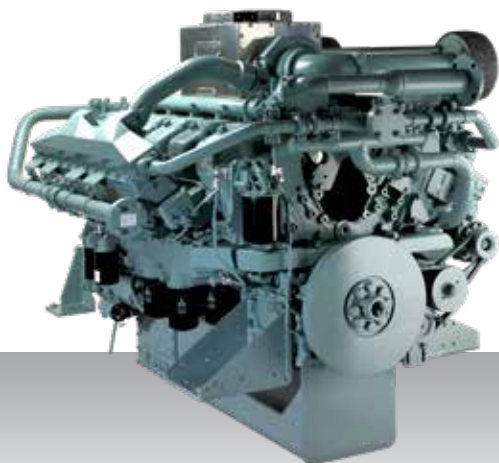


Auxiliary generator  
Not regulated - High speed

# S12A2-MPTA



12-cylinder, 4-stroke, water-cooled diesel engine,  
with direct-injection, turbocharger and air-cooler.

Bore x stroke (mm) : 150 x 160

Displacement (l) : 33.93

## Rating

kW	bhp	rpm	Hz	Emission
679	911	1500	50	not regulated
761	1021	1800	60	not regulated

## Engine dimensions & dry weight

L (mm) : 2002

W (mm) : 1442

H (mm) : 1596

Dry weight (kg) : 3380

Dimensions and weight are based on standard configuration.