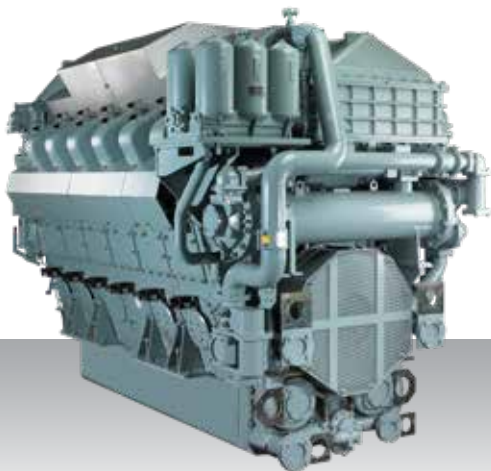


Auxiliary generator
IMO Tier II - Medium speed

S12U-MPTK



12-cylinder, 4-stroke, water-cooled diesel engine,
with direct-injection, turbocharger and air-cooler.

Bore x stroke (mm) : 240 x 260

Displacement (l) : 141.15

Rating

kW	bhp	rpm	Hz	Emission
2299	3083	900	60	IMO Tier II
2541	3408	1000	50	IMO Tier II
2685	3601	1200	60	IMO Tier II

Engine dimensions & dry weight

L (mm) : 3562

W (mm) : 1910

H (mm) : 2374

Dry weight (kg) : 15500

Dimensions and weight are based on standard configuration.