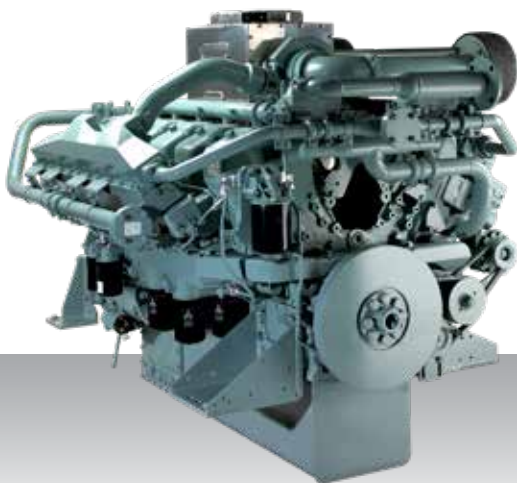


Propulsion - IMO Tier II
High speed - Engine

S12A2-T2MPTAW2



12-cylinder, 4-stroke, water-cooled diesel engine, with direct-injection, turbocharger and air-cooler.

Bore x stroke (mm) : 150 x 160
Displacement (l) : 33.93

Rating

kW	bhp	rpm	Rating	Emission
727	975	1800	UCD	IMO Tier II
818	1097	1800	HD	IMO Tier II

Engine dimensions & dry weight

L (mm) : 2059
W (mm) : 1654
H (mm) : 1566
Dry weight (kg) : 3380

Dimensions and weight are based on standard configuration.