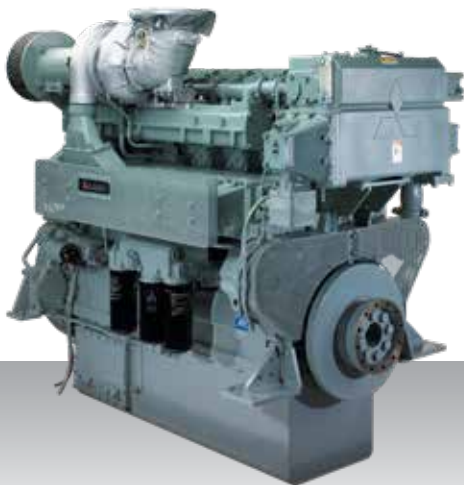


Propulsion - IMO Tier II
High speed - Propulsion package

S6R2-T2MPTK



6-cylinder, 4-stroke, water-cooled diesel engine,
with direct-injection, turbocharger, air-cooler,
built-up heat exchanger and sea water pump.

Bore x stroke (mm) : 170 x 220
Displacement (l) : 29.96

Rating

kW	bhp	rpm	Rating	Emission
480	643	1350	UCD	IMO Tier II
530	711	1400	HD	IMO Tier II
610	818	1500	MD	IMO Tier II

Engine dimensions & dry weight

L (mm) : 2207
W (mm) : 1156
H (mm) : 1695
Dry weight (kg) : 3000

Dimensions and weight are based on standard configuration.