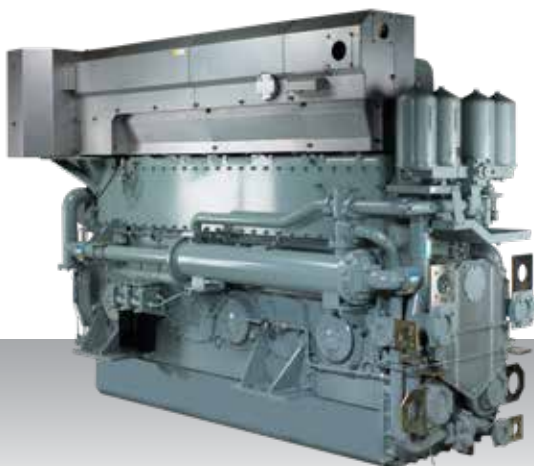


Propulsion - IMO Tier II  
Medium speed

# S6U-MPTK



6-cylinder, 4-stroke, water-cooled diesel engine,  
with direct-injection, turbocharger and air-cooler.

Bore x stroke (mm) : 240 x 260

Displacement (l) : 70.57

## Rating

kW	bhp	rpm	Rating	Emission
680	912	1100	HD	IMO Tier II
719	964	1100	HD	IMO Tier II
749	1004	1100	HD	IMO Tier II
1007	1350	1060	HD	IMO Tier II
1103	1479	1150	HD-T	IMO Tier II
1119	1499	1100	MD	IMO Tier II

## Engine dimensions & dry weight

L (mm) : 3211

W (mm) : 1429

H (mm) : 2104

Dry weight (kg) : 8350

Dimensions and weight are based on standard configuration.